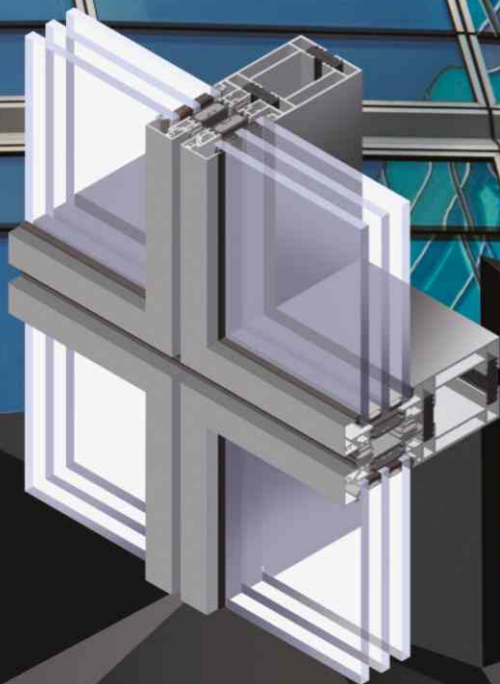


MS

**MODULAR FACADE**



The system is designed for constructing external vertical facades featuring improved thermal insulation. The system consists of prefabricated segments of aluminium profile frames with glass infill (or other material) to be installed on site, together with joints sealed with appropriate EPDM gaskets.

# MS

The system is designed for constructing external vertical facades featuring improved thermal insulation. The system consists of prefabricated segments of aluminium profile frames with glass infill (or other material) to be installed on site, together with joints sealed with appropriate EPDM gaskets.

The segments can be made as single or double (with a centre stud); the limited number of segments reduces the total installation time.

The system can also be installed in segments of window and door structures available within the aluminium systems offered by Aliplast.

In addition, the system can be installed within the depth of facade profiles on the internal glazing side, sun exposure protection systems such as shutters and blinds.

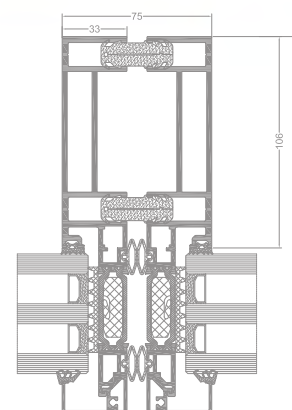
In order to improve strength parameters of the profiles, they can be reinforced with aluminium or steel flat bars and shaped sections inserted into profile chambers. Dimensions of the chambers are selected accordingly to be able to use commonly available standard flat bars and shaped sections.

High tightness parameters are possible by the application of EPDM gaskets. Internal glazing seals are selected based on the glazing table. Expansion seals on segment joints create 4 sealing barriers.

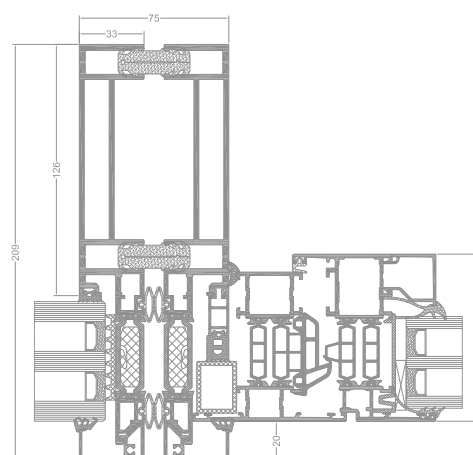
High thermal performance is ensured by 42 mm polyamide (or Noryl) thermal inserts in profiles. The space within the profiles between the thermal inserts is filled with insulating material sheets.

The prefabrication of segments takes place entirely at the workshop. The segments are fixed to the primary building structure using brackets which comprise aluminium elements joined with stainless steel screws to adjust the position of the segments being fixed in three directions. Bracket fixing to the building structure requires a strength analysis of the fasteners (anchors, screws) by an authorised design engineer.

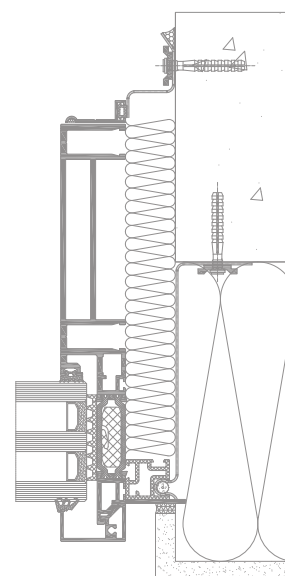
Wide range of colours – RAL palette (Qualicoat 1518), texture colours, Aliplast Wood Colour Effect (wood-like colours), Aliplast Loft View – colours imitating stone surfaces (Qualideco PL-0001), anodized colour (Qualanod 1808), bi-colour.



connection between modules in the MS system



combination of the IP window system and the MS system



connection of the MS system with the building structure

## TECHNICAL SPECIFICATION

SYSTEM	MATERIAL	WIDTH PROFILES	WIDTH CENTRE PROFILES (MULLIONS AND TRANSOMS)	WIDTH OF THE SPECIAL TRANSOM PROFILE	GLAZING RANGE	THERMAL INSULATION Uf *
MS	aluminium	75 mm (once installed) for vertical profiles 85 mm (once installed) for horizontal profiles	75 mm	55 mm	6 mm - 60 mm	Uf from 1,09 W/m <sup>2</sup> K

\* Thermal insulation is dependent on a combination of profiles and thickness of the filling.